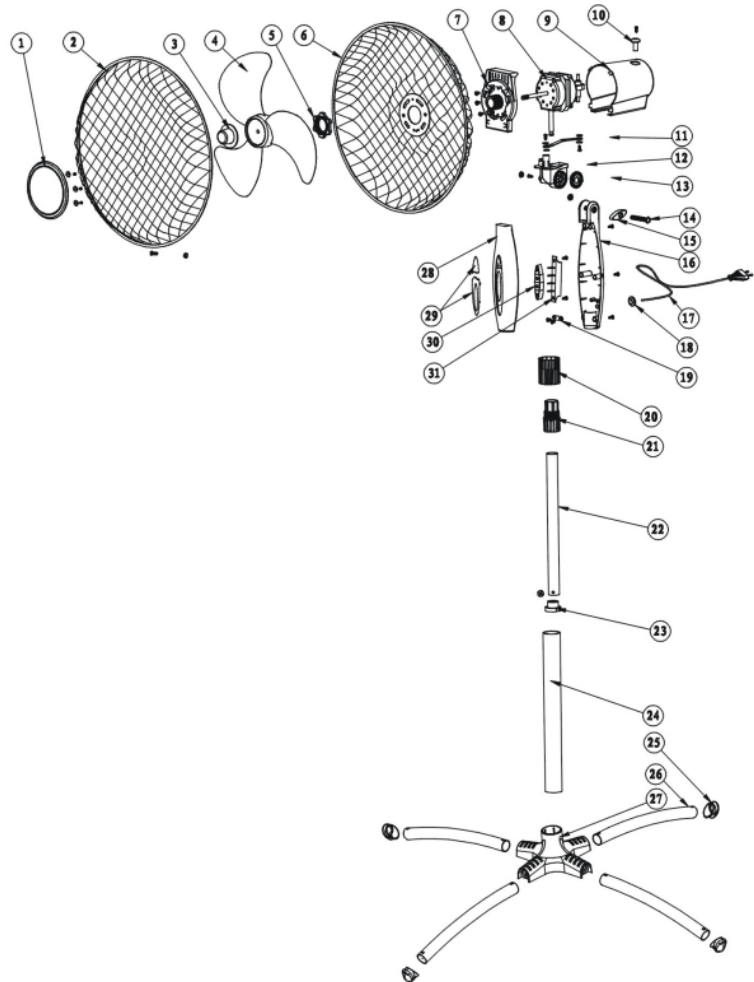


1. Plasticlid
2. Frontguard
3. Mounting nut
4. Fan blade
5. Mounting nut
6. Back guard
7. Motor shaft
8. Motor
9. Motor housing
10. Oscillaatin knob
20. Adjustment nut
21. Lock sprain
22. Upper pipe
23. Pipe connector
24. Lower pipe
25. Cover
26. Crossbase
27. Foot
28. Switch compartment
30. Switches
31. ON/OFF



### Assembly

1. Secure lower pipe with pipe support to the hub of cross base with screw provided.
2. Extend upper pipe, insert the pipe connector through upper pipe onto lower pipe and tighten.
3. Attach the motor with switch compartment onto the upper pipe. Ensure the switch compartment is pushed fully onto the upper pipe and secured with the screw provided.
4. Position back guard firmly to motor housing and then fasten by turning guard mounting nut clockwise tightly.
5. Push the blade along motor shaft and fasten firmly with the blade.
6. Hang the front guard to back guard with the position fixer provided at the rim of guard, and then fix together with clips provided.